

ENCOR

- Platform Setup Guide,
- Microsoft SQL 2008 Workgroups
- Version 1.0.0.0
-
-



ENCOR Platform Setup Guide, Microsoft SQL 2008 Workgroups

Date of Issue	Product ID Num.	Part Number	Brief Description
December 2017	45002/074	89000912	1.0.0.0 Release
January 2018	45002/074	89000925	1.0.0.0 Release (Updated)

©Copyright NCR Corporation 1995-2018
All rights reserved

This publication is protected by federal copyright law. This document and its contents are the proprietary, confidential information and property of NCR Corporation ("NCR"). Unauthorized disclosure, reproduction, distribution or use of this document and/or its contents in any form is strictly prohibited. No part of this publication may be reproduced or transmitted into any human or computer language in any form or by any means, stored in a retrieval system, transmitted, redistributed, translated or disclosed to third parties, or de-compiled in any way including, but not limited to, photocopy, photograph, electronic, mechanical, magnetic or manual without the express written permission of NCR or its licensors, if any. This document, notwithstanding the above, may be distributed in electronic or printed form by NCR to personnel who are employed by either (a) a licensee and end user of the subject system of this document or (b) personnel from an authorized NCR Channel Partner or Solution Provider of the subject system of this document. All copies of this document so distributed and/or so authorized, shall contain a full copy of this copyright notice.

NCR has prepared this document as a guide to the proper installation, operation, customization and/or maintenance of NCR products. The drawings and specifications contained herein are the property of NCR and/or its licensors.

NCR endeavors to ensure that the information in this document is correct and fairly stated but does not accept liability for any error or omission. NCR makes no representation or warranties with respect to the contents hereof, and specifically disclaims any implied warranties of merchantability or fitness for a particular purpose or non-infringement. No commitments by NCR or its suppliers are made by or from this documentation which is provided for information only.

Development of NCR products and documentation is continuous: NCR reserves the right to revise this publication and to make changes at any time to the contents hereof or to the products herein described or discussed without notice and without any obligation for NCR to notify any person or organization of such revision or changes. Information published in this document will likely be superseded, and it is recommended that users regularly check for updates and newer versions.

The trademarks NCR, Retailix, StoreNext, ISS45, ScanMaster, R10, ACS, PocketOffice, RPO, RBO, ABO, Connected Payments, ServerEPS, Connected Services, Connected Loyalty, WinEPS and all other NCR product names are registered trademarks or trademarks of NCR; all other trademarks or registered trademarks are the property of their respective owners. Third-party products, services, or company names referenced in this document may be trademarked or copyrighted by their respective owners, and are for identification purposes only. Copyrights, trademarks and license agreements shall be governed and construed in accordance with the laws of the State of New York and the Federal Arbitration Act, and shall benefit NCR, its successors, and assigns.

Address comments and corrections regarding this document to:

Attn: Software Program Director
NCR
797 Commonwealth Drive
Warrendale, PA 15086

Table of Contents

<i>Chapter 1:</i> Overview	1-1
<i>Chapter 2:</i> SQL Server 2008 R2 Installation	2-1
<i>Chapter 3:</i> Backwards Compatibility (SQLDMO) SQLServer2005_BC.msi	3-1
<i>Chapter 4:</i> Enable Named Pipes.....	4-1
<i>Chapter 5:</i> Disable Data Execution Prevention (DEP)	5-1

Revision Record

Issue	Date	Remarks
A	Dec 2017	First issue

Chapter 1: Overview

Note:

The **SQL** CD is labeled Microsoft SQL Server 2008 Workgroup Edition (Part # 89000627 - Release Date 8/15/2011).

This document will guide you through the installation of:

- SQL Server 2008 R2 Workgroups
- SQLDMO pack install
- SQL2008 Service Pack 1
- Enabling Named Pipes
- Disabling Data Execution Prevention (DEP)

The recommended minimum hardware requirements for SQL 2008 Standard Edition (32-bit/64-bit) and **ENCOR** are:

- CPU = P4 - 2.0 GHz or higher
- RAM = 4 GB or higher
- HD = 80 GB or higher

Software requirements for MFS1 are:

- Windows 7 Professional 32-bit/64-bit
- Windows Server 2008 Standard Server (32-bit) / Server 2008 R2 (64-bit)

Note:

Windows Server 2000 is no longer supported by SQL Server 2008.

Prerequisites (* = Installed by installation wizard if they do not exist)

- .Net Framework 2.0
- .Net Framework 3.5sp1
- *KB959209 for Server 2008 and 2003 (KB959209 consists of three separate files). Follow Knowledge Base Article KB959209 for more information.
- Windows Installer 4.5
- SQL Server Native Client*
- SQL Server Setup support files*
- Internet Explorer 8
- SQLDMO Pack (backward compatibility)

Note:

The user must be logged into Windows as the Administrator User when installing any **ENCOR** related applications on MFS1, LFS workstation, or POS terminal.

Chapter 2: SQL Server 2008 R2 Installation

1. From the CD or from the folder containing the SQL source files, click **setup.exe**. SQL Server Installation Center is displayed.



Figure 2-1. SQL Server Installation Center

2. On the left side, click the **Installation** tab. Installation options are displayed.

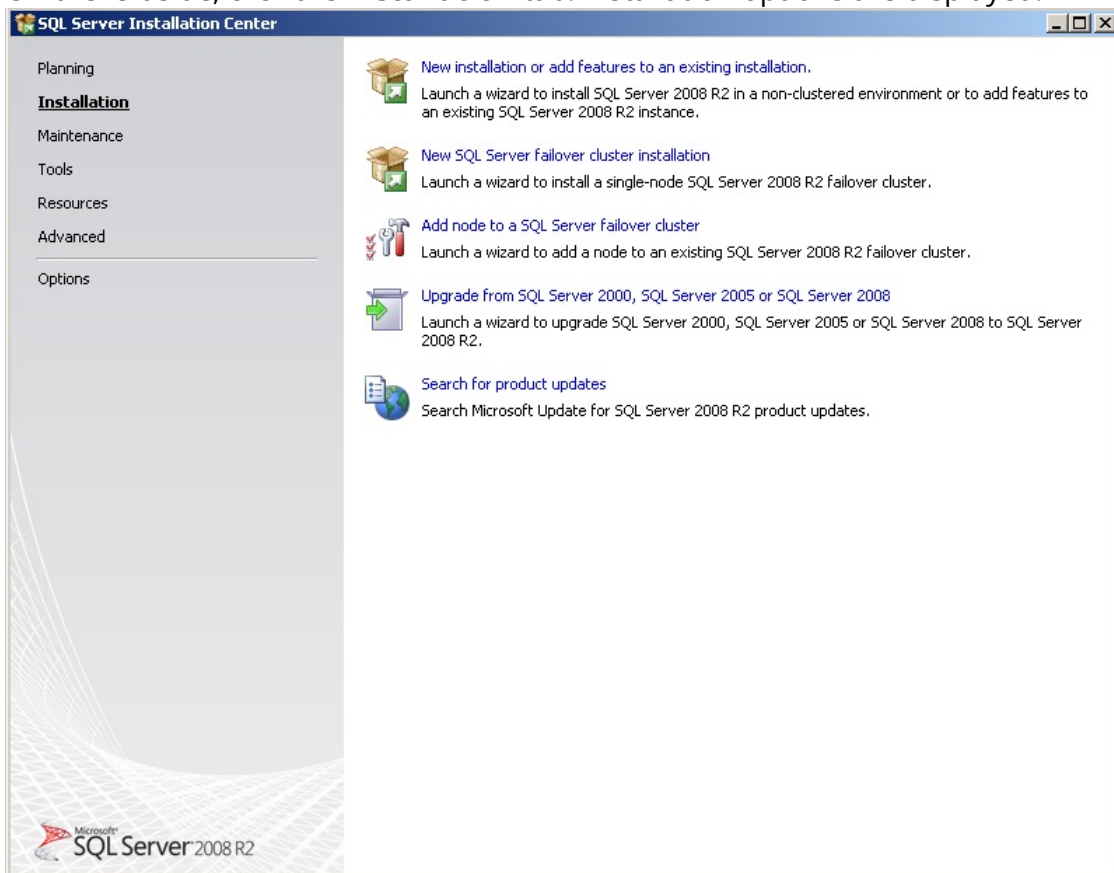


Figure 2-2. SQL Server Installation Center - Installation

3. Select the top hyperlink, **New installation or add features to an existing installation**. An SQL Server 2008 message appears and then the Setup Support Rules screen will be displayed.



Figure 2-3. SQL Server 2008 R2

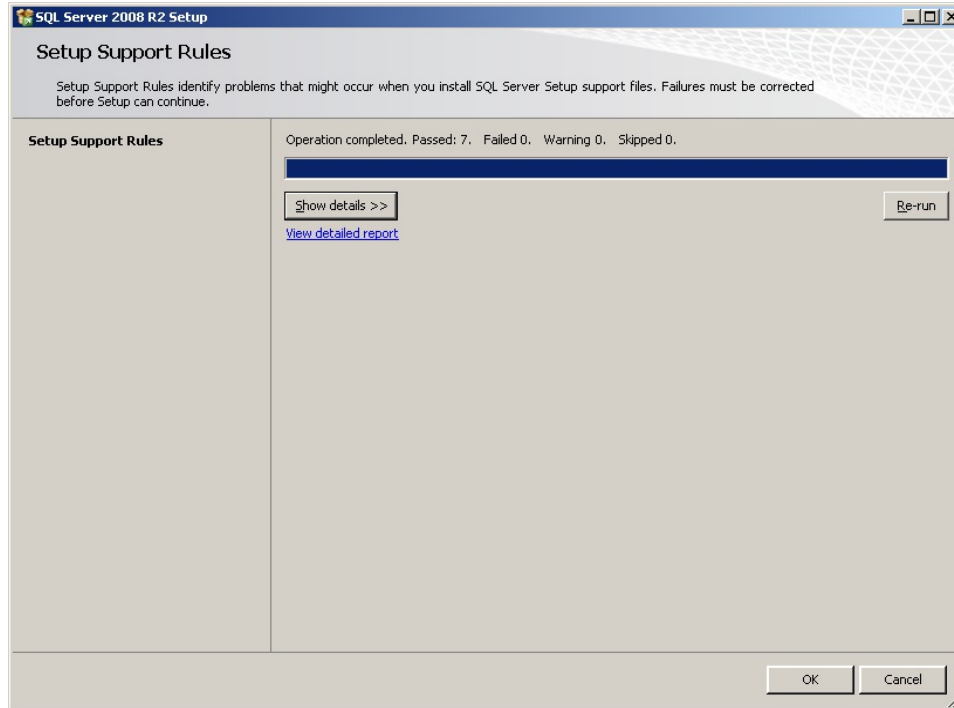


Figure 2-4. SQL Server 2008 R2 Setup - Setup Support Rules

4. Click the  to view detailed view details.

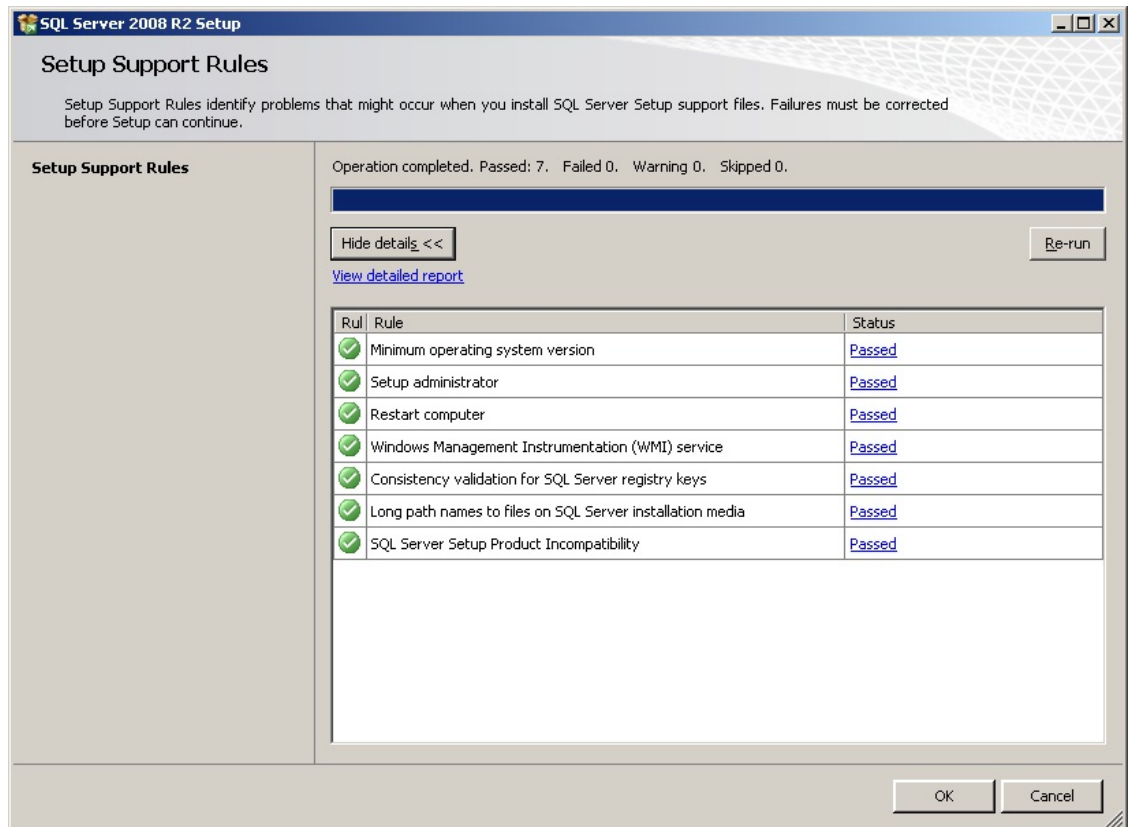

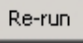
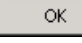


Figure 2-5. SQL Server 2008 R2 Setup - Setup Support Rules - View Details

5. Make sure that all lines have the  sign. If one of the lines has a different sign, you can press the hyperlink on the Status column to read more details. (Re-run the test again by clicking the  button.)
6. Click . The Product Key screen will be displayed.

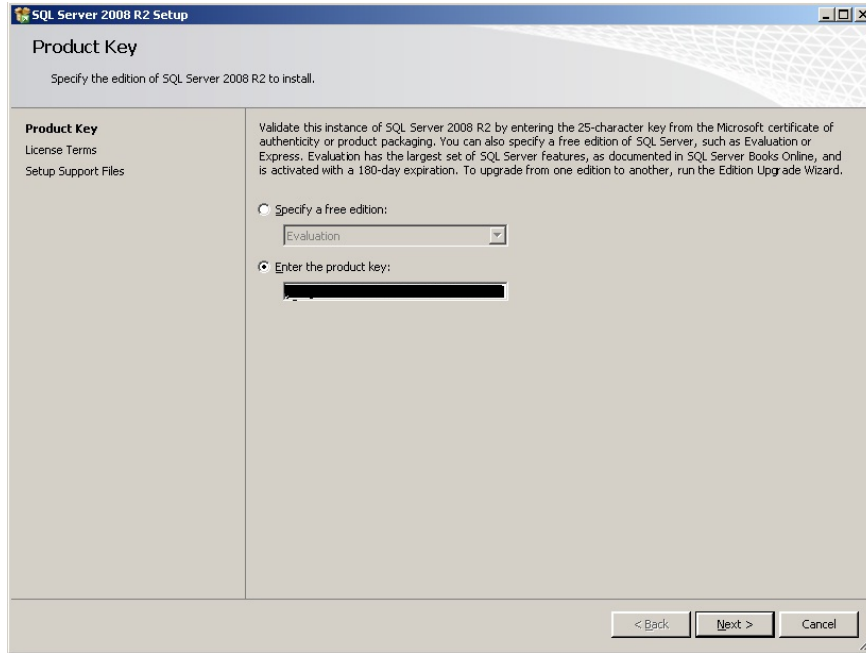


Figure 2-6. SQL Server 2008 R2 Setup - Product Key

7. Enter the product License key and click . The License Terms screen is displayed.

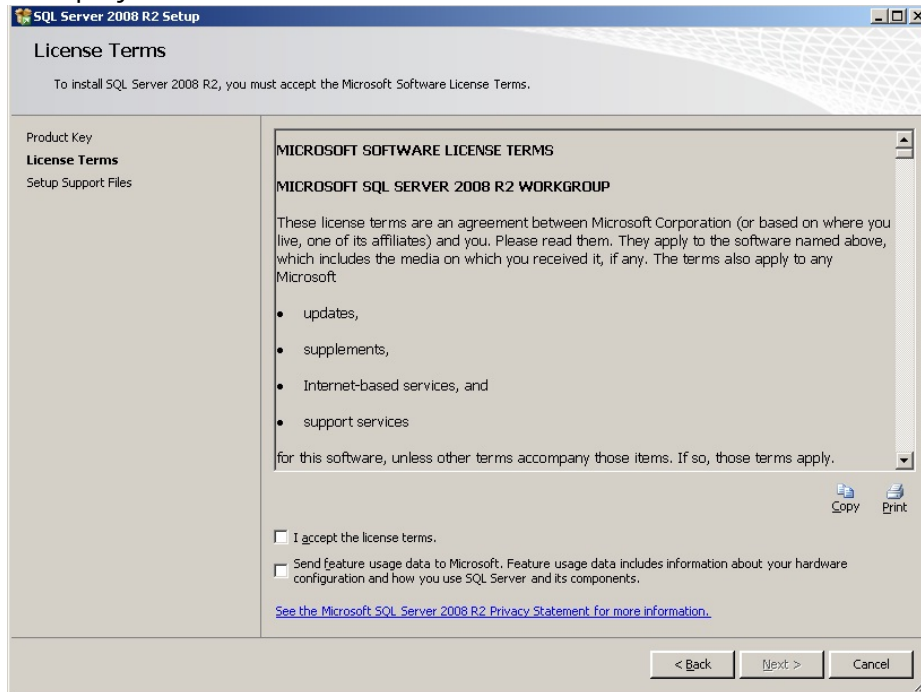


Figure 2-7. SQL Server 2008 R2 Setup - License Terms

8. Approve the license agreement by checking the I accept the license terms. checkbox.
9. Click . The Setup Support Files screen is displayed.

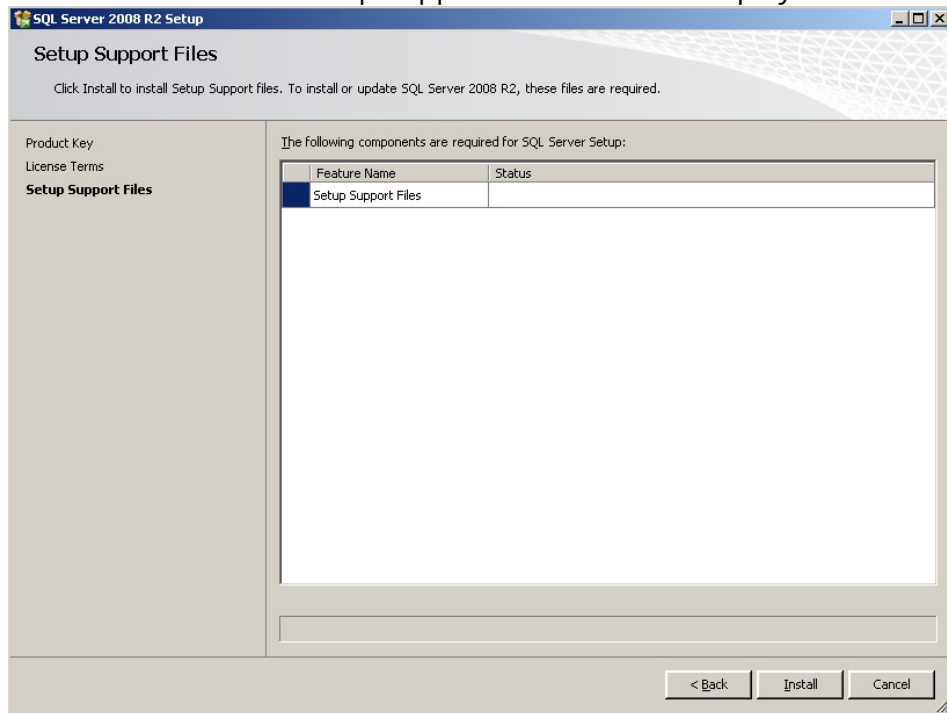


Figure 2-8. SQL Server 2008 R2 Setup - Setup Support Files

10. Click . The Setup Support Files screen with results is displayed.

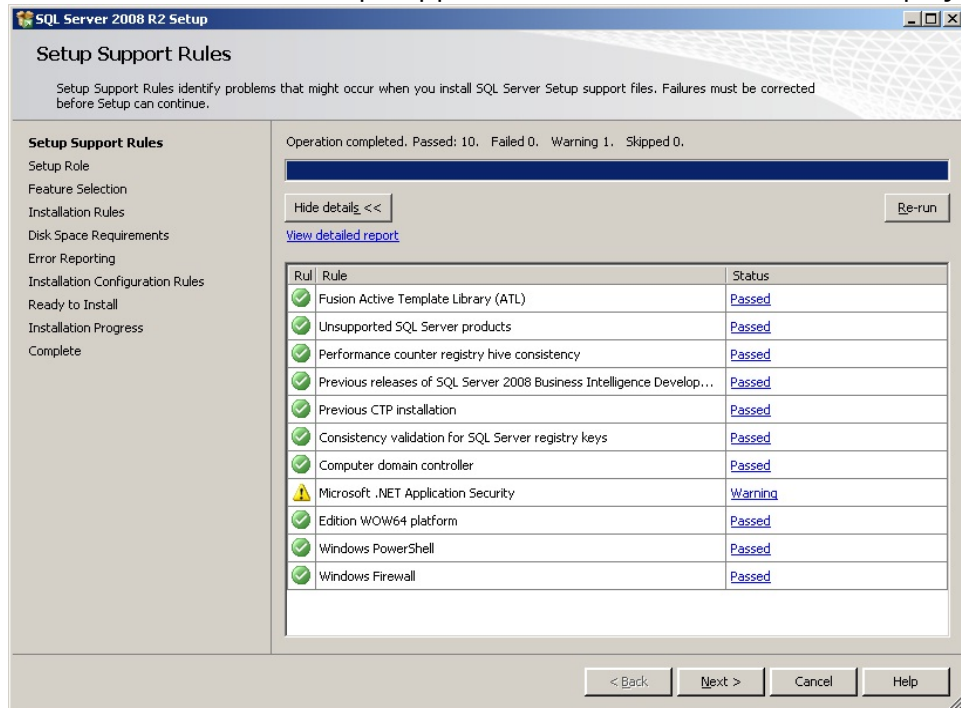


Figure 2-9. SQL Server 2008 R2 Setup - Setup Support Rules

11. Ensure that no Failed Status exists. Click **Next >** to continue. The Setup Role screen is displayed.

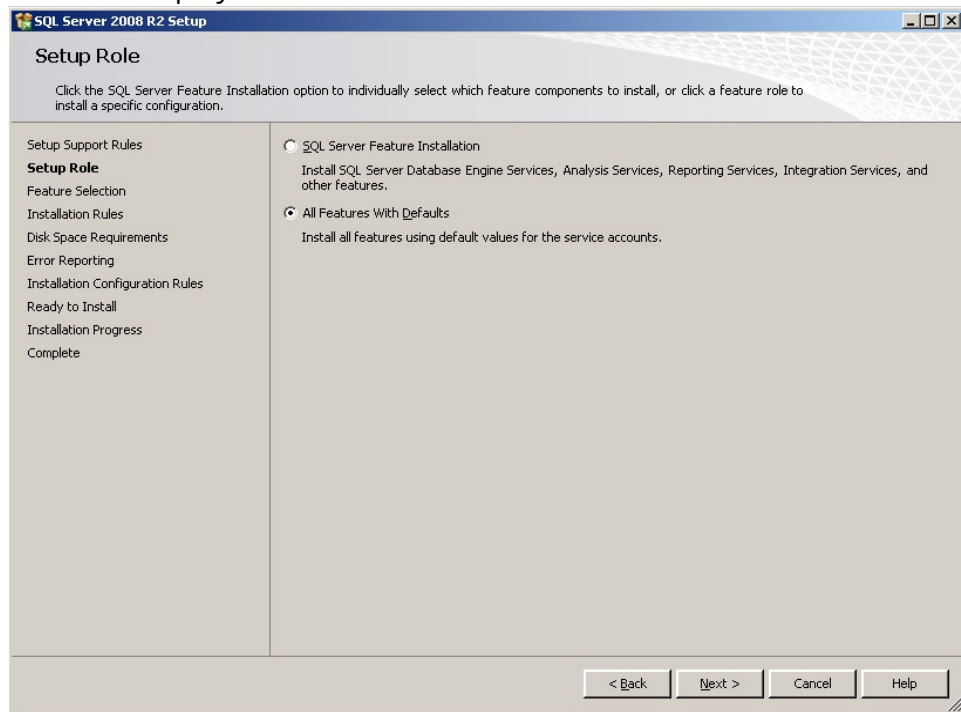


Figure 2-10. SQL Server 2008 R2 Setup - Setup Role

12. Click **Next >** to continue.

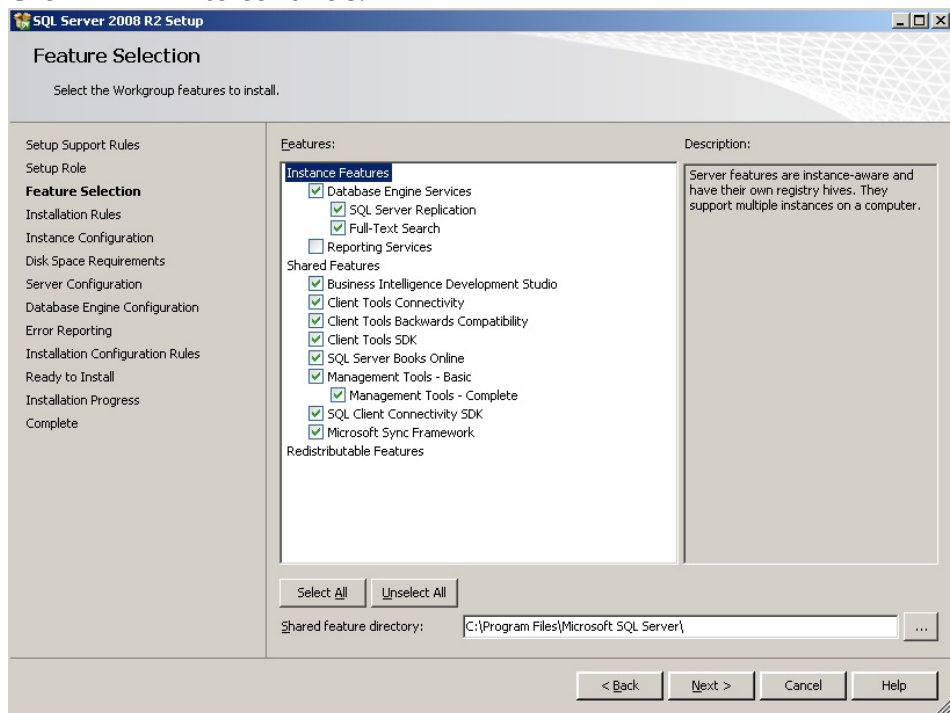


Figure 2-11. SQL Server 2008 R2 Setup - Feature Selection

13. Click **Select All** and then uncheck **Reporting Services**.

14. Click **Next >** to continue. The Installation Rules screen is displayed.

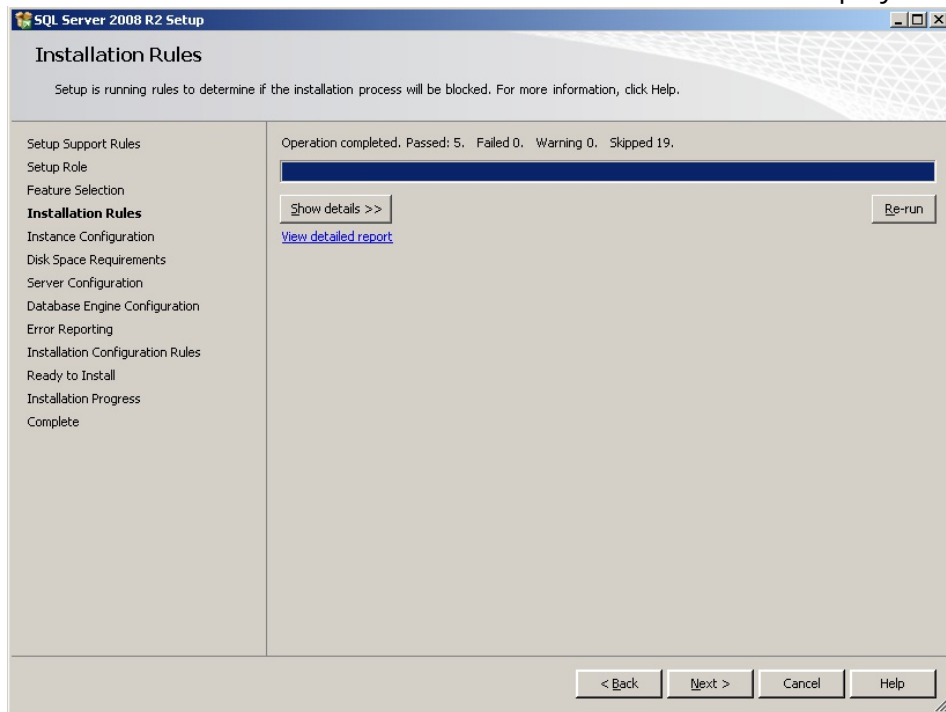


Figure 2-12. SQL Server 2008 R2 Setup - Installation Rules

15. Click the **Show details >>** to view detailed view details.

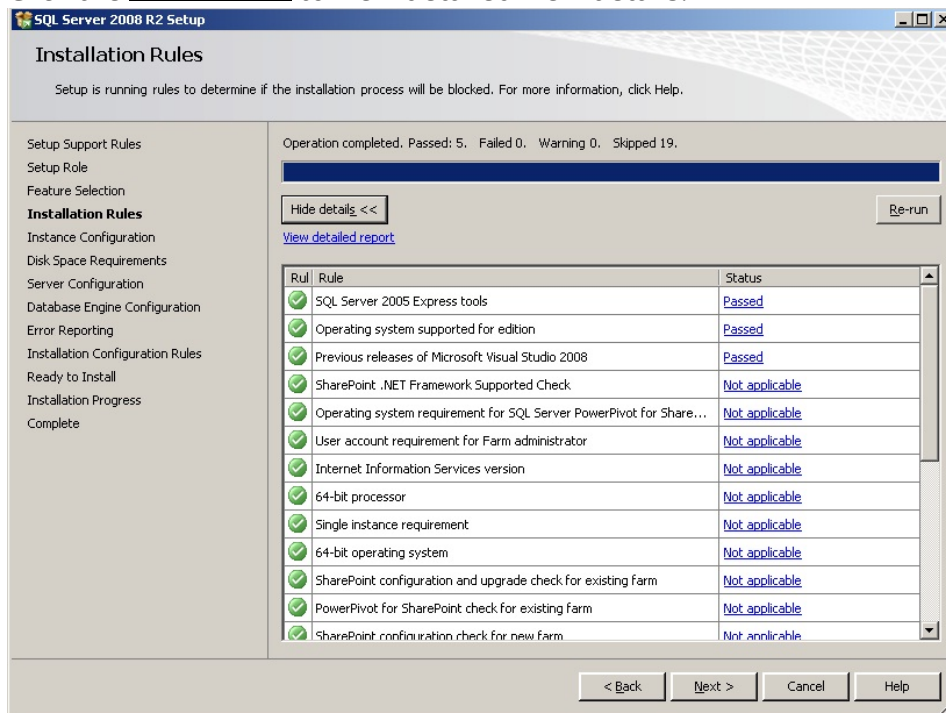


Figure 2-13. SQL Server 2008 R2 Setup - Installation Rules

16. Make sure the is green and click **Next >**. The Instance Configuration screen is displayed.

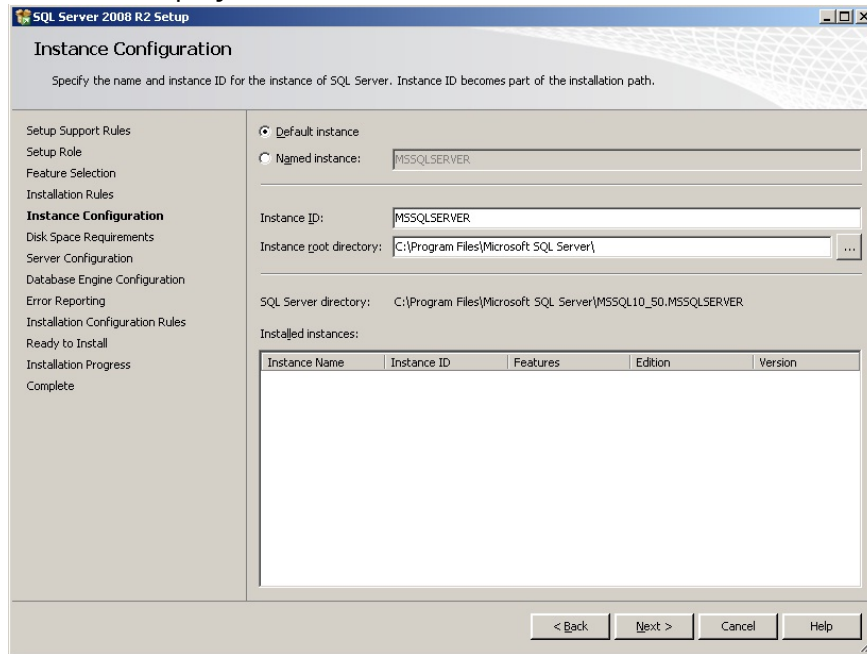
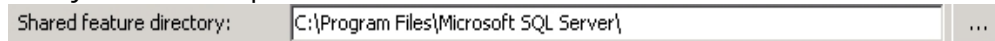


Figure 2-14. SQL Server 2008 R2 Setup - Instance Configuration

17. Select the Default instance radio button.
18. Verify the correct path:



19. Click **Next >**. The Disk Space Requirements screen is displayed. The system will check the available disk space according to the path specified in step 18.

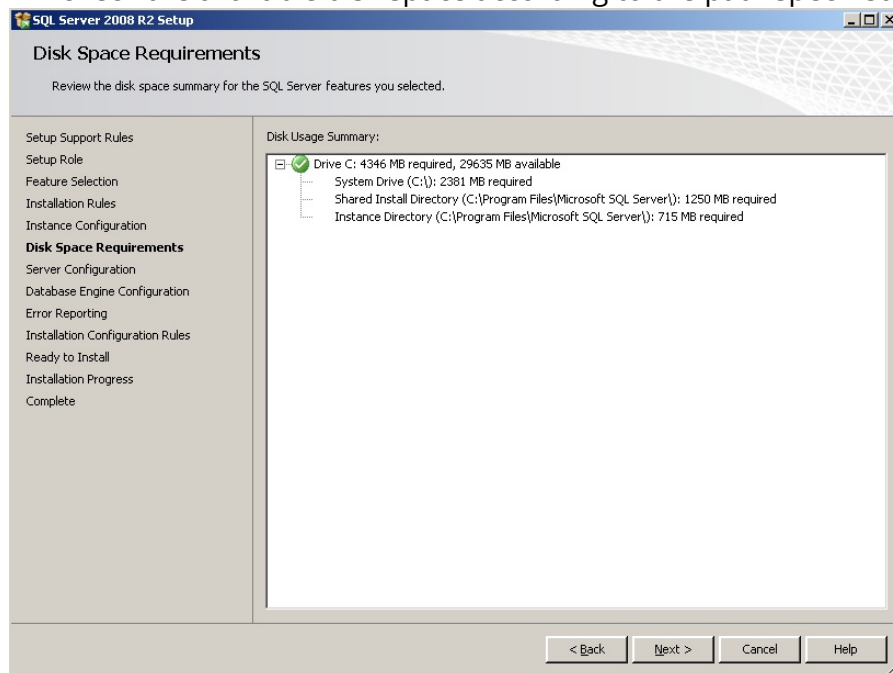


Figure 2-15. SQL Server 2008 R2 Setup - Disk Space Requirements

20. Click **Next >**. The Server Configuration screen is displayed.

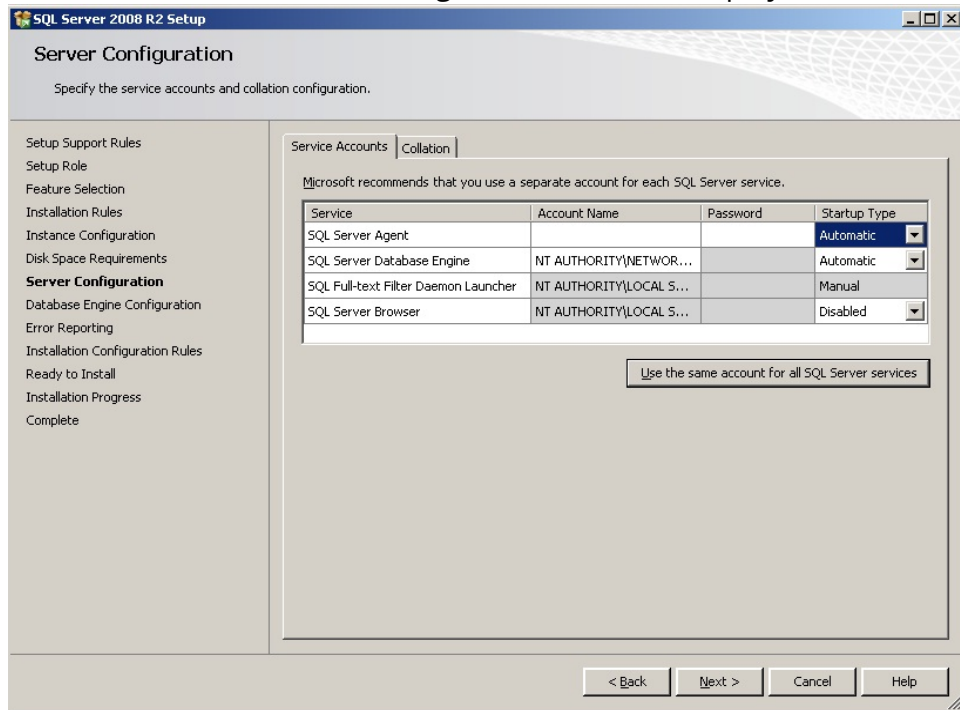
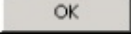


Figure 2-16. SQL Server 2008 R2 Setup - Server Configuration

21. Set SQL Server Agent to **Automatic**. Set the Account Name and the Password for each of the services, or click the **Use the same account for all SQL Server services** button. The Use the same account for all SQL Server 2008 Services dialog box is displayed. Use the Browse button to get the correct Account Name.



Figure 2-17. Use the same account for all SQL Server 2008 R2 services

22. Enter **Administrator** and password and click the  button. The Server Configuration screen displays (do not click Next yet).

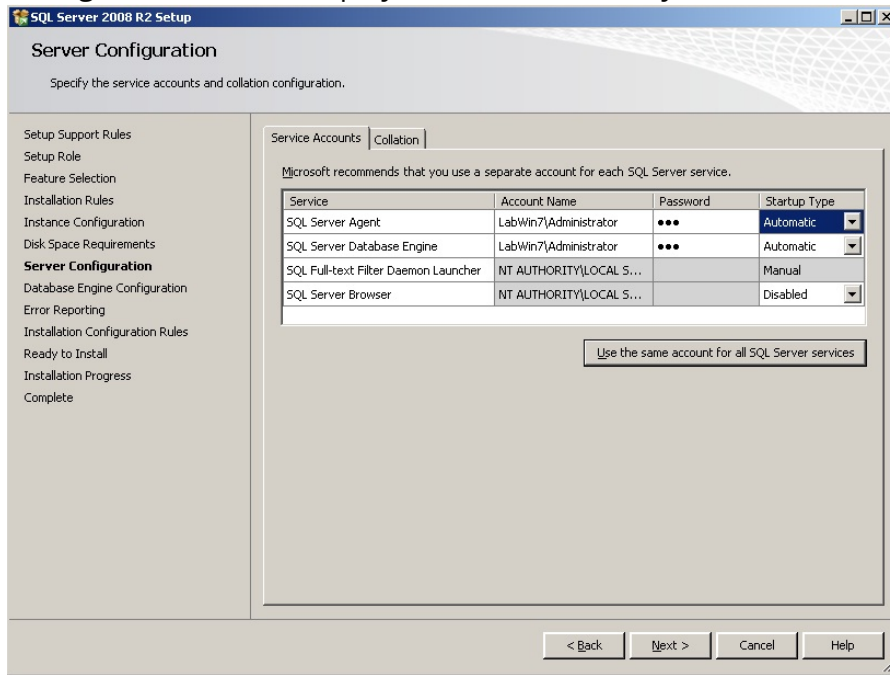


Figure 2-18. SQL Server 2008 R2 Setup - Server Configuration

23. Click on Collation and insure the collation is configured as:
SQL_Latin1_General_CP1_CI_AS

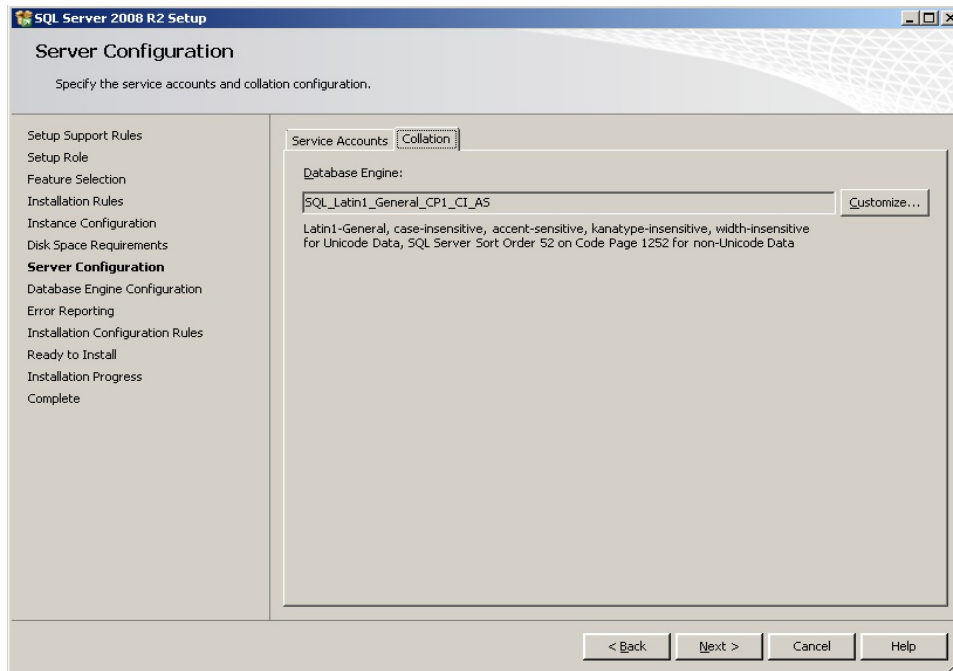


Figure 2-19. SQL Server 2008 R2 Setup - Server Configuration - Collation Tab

24. Click . The Database Engine Configuration screen is displayed.

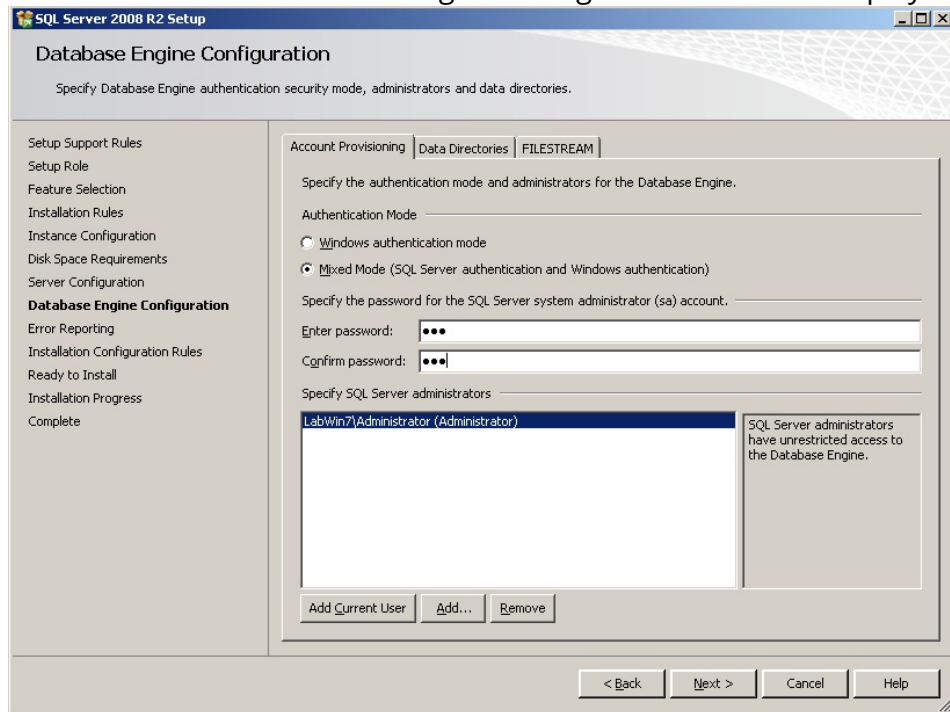
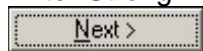


Figure 2-20. SQL Server 2008 R2 Setup - Database Engine Configuration

25. Select the **Mixed Mode (Windows Authentication and SQL Server Authentication)**

Enter Strong Password (i.e. Store123!!!) and confirm then Click



26. The Error and Usage Reporting Screen displays.

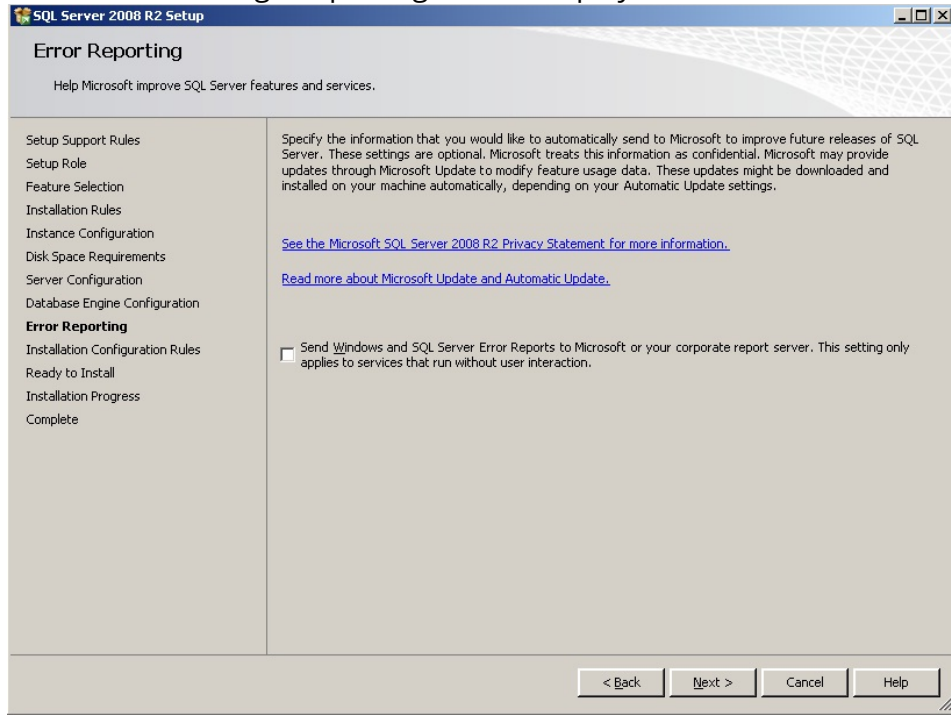


Figure 2-21. SQL Server 2008 R2 Setup - Error Reporting

27. Click . The Installation Rules screen displays.

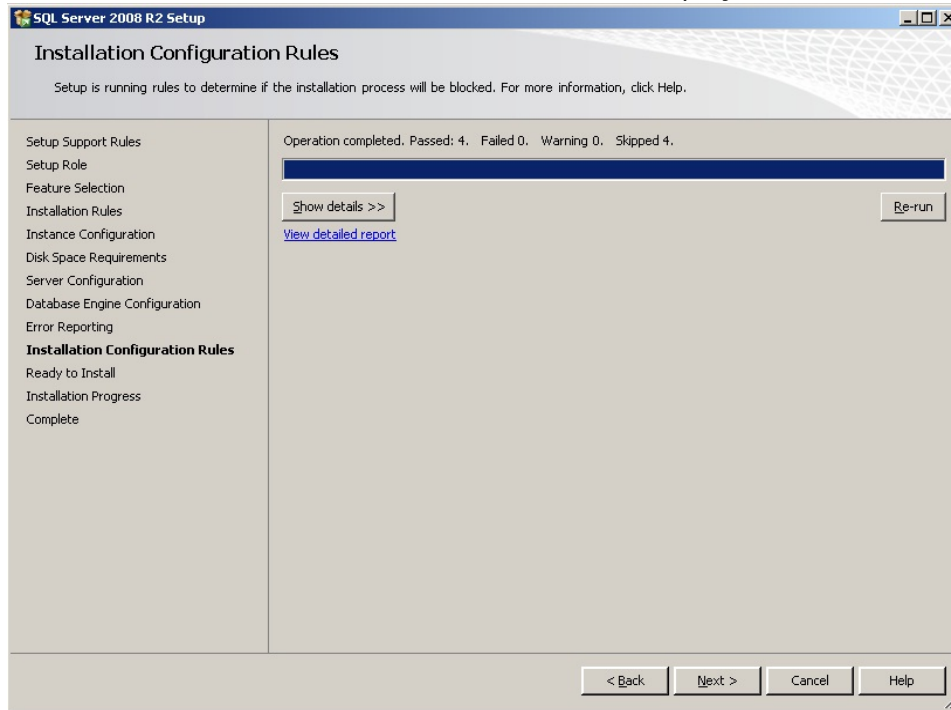



Figure 2-182. SQL Server 2008 R2 Setup - Installation Configuration Rules

28. Click  to view detailed view details.

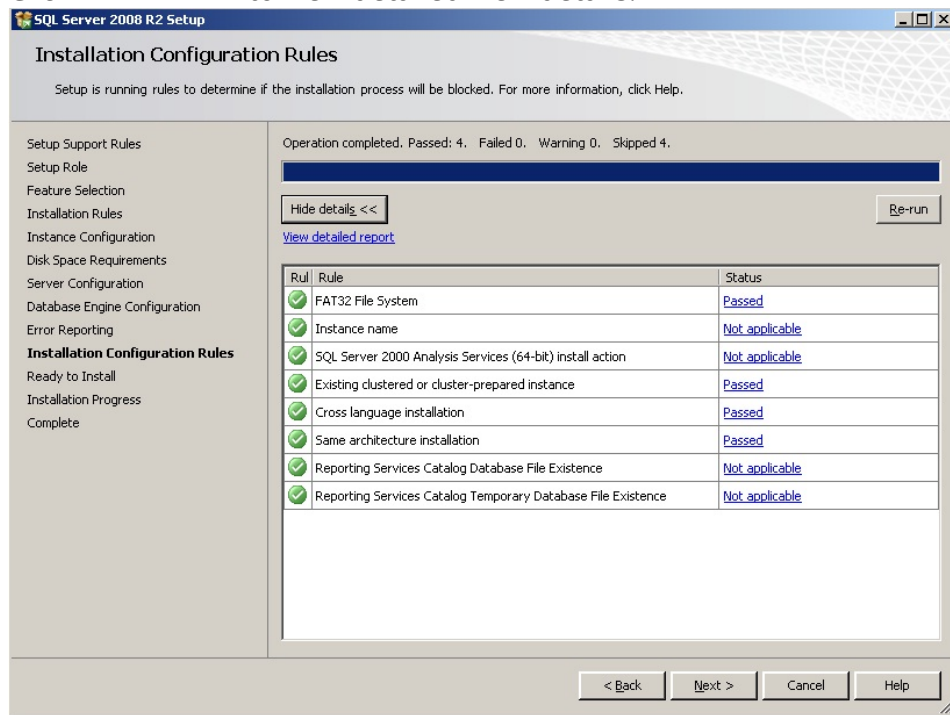




Figure 2-23. SQL Server 2008 R2 Setup - Installation Configuration Rules - Show Details

29. Make sure the  is green and click . The Ready to Install screen is displayed.

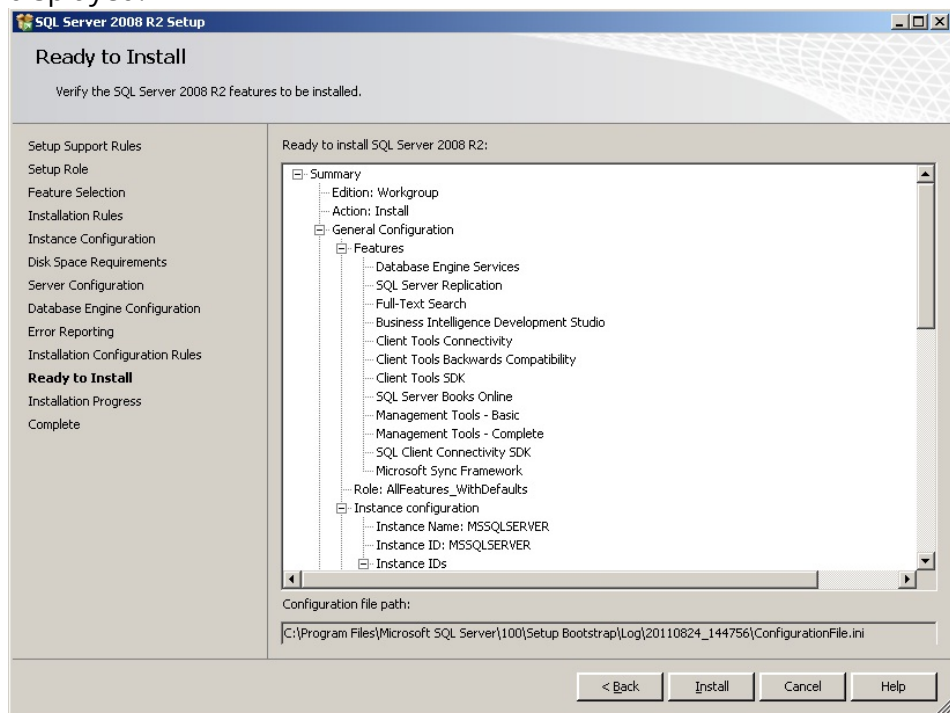



Figure 2-194. SQL Server 2008 R2 Setup - Ready to Install

30. Scroll through the summary to make sure all settings are correct.

- Click  to start the SQL installation process. The Installation Progress screen is displayed.

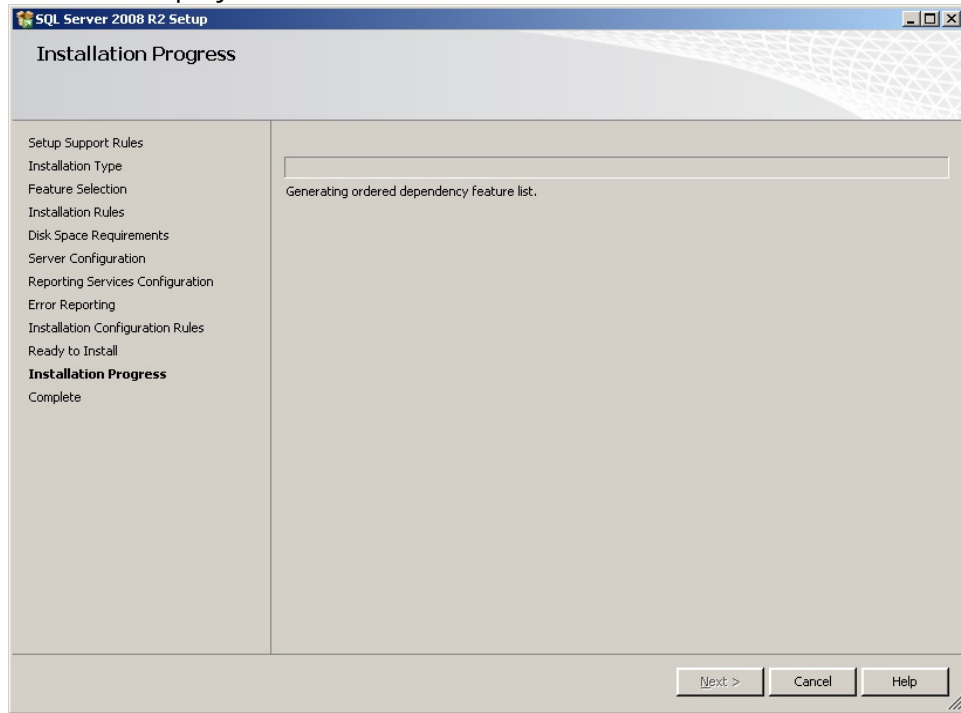


Figure 2-205. SQL Server 2008 R2 Setup - Installation Progress

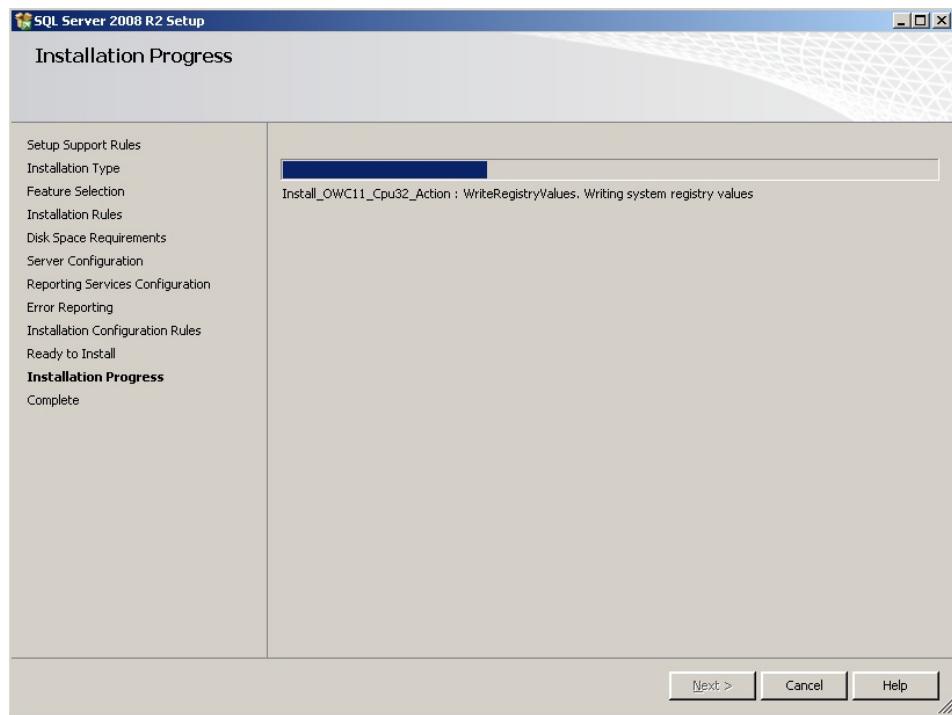


Figure 2-26. SQL Server 2008 R2 Setup - Installation Progress

32. View the successful details of the install.

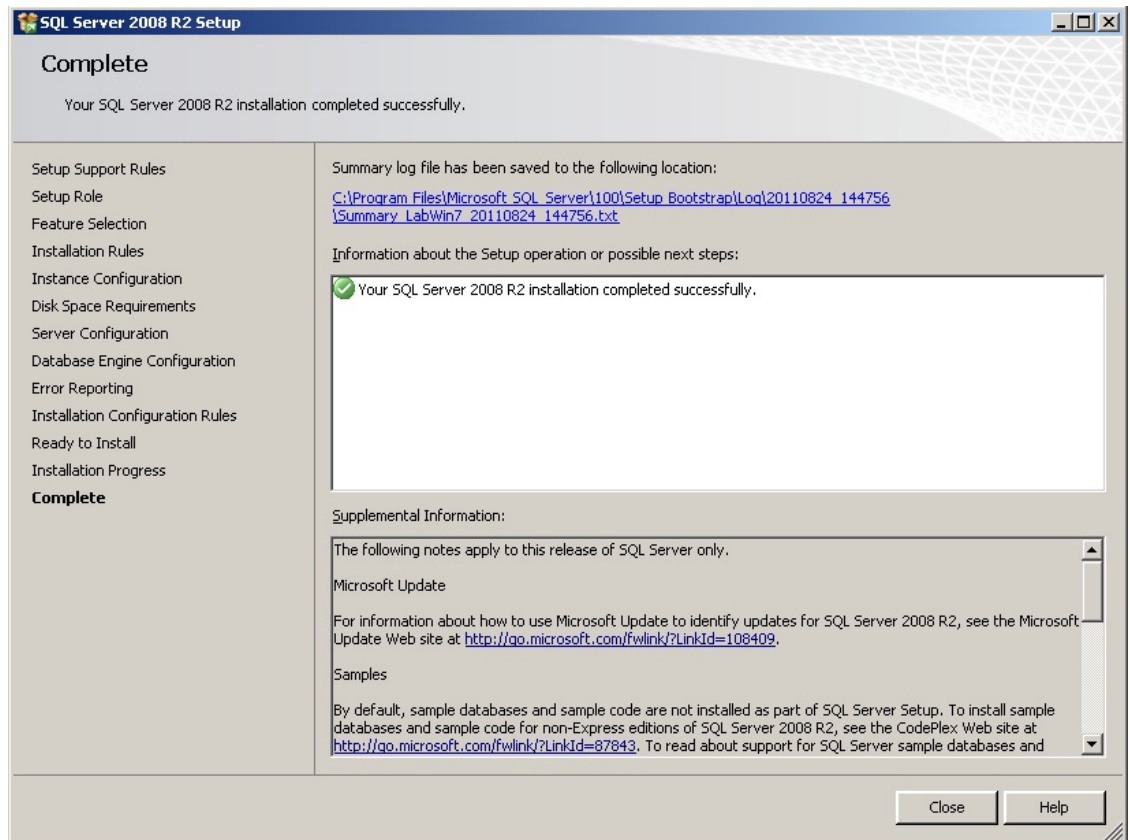
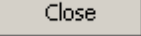


Figure 2-217. SQL Server 2008 R2 Setup - Installation Complete

33. Click  to finish the SQL install. It is recommended that MFS1 be rebooted now. SQL Server 2008 R2 Workgroups has been successfully installed.

Important

Reboot the MFS1.

Chapter 3: Backwards Compatibility (SQLDMO) SQLServer2005_BC.msi

Note:

The SQL Compatibility installs can be found on the **ENCOR 1.0.0.0** Release in the `\SQLComp\X32` or `\SQLComp\X64` sub folders or the SQL Server 2008 Workgroup Edition CD `\1033_ENI_LP\X86\setup\X86` for 32bit and `\X64\setup\X64` for 64bit.

1. Run SQLServer2005_BC.msi.
Examples from the Workgroups CD
On 32-bit:

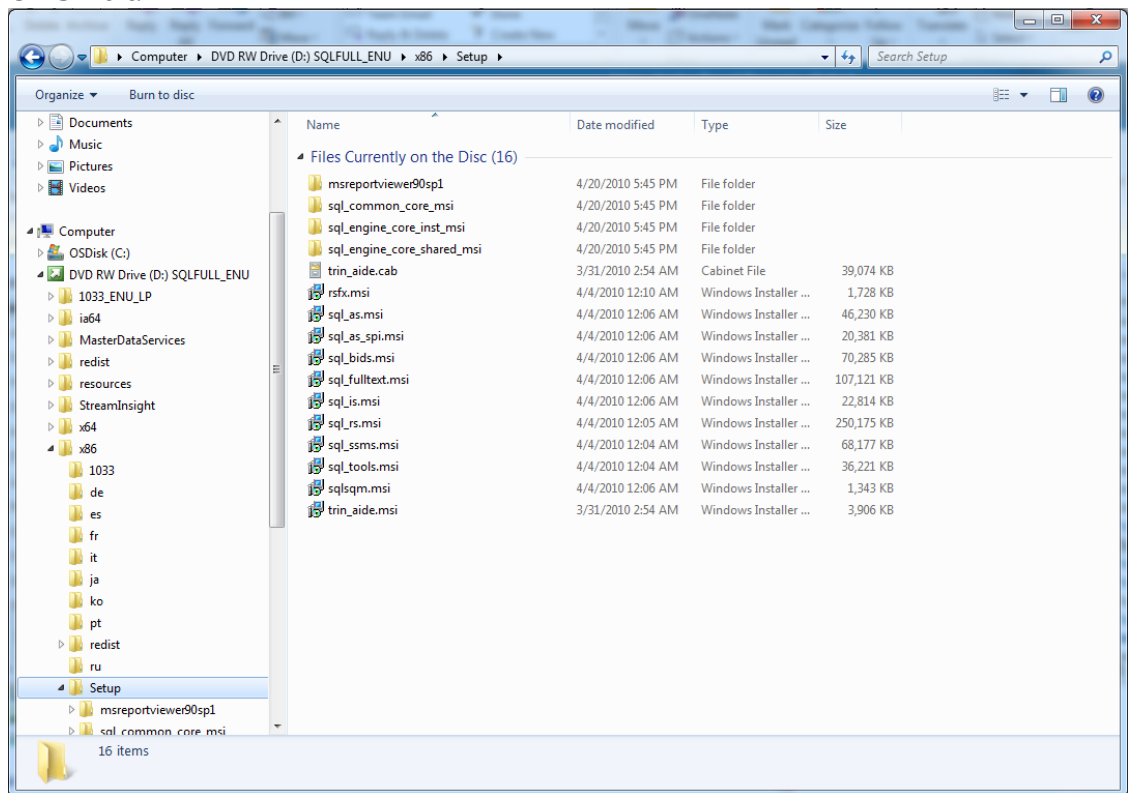


Figure 3-1. SQLServer2005_BC.msi - 32-bit

On 64-bit:

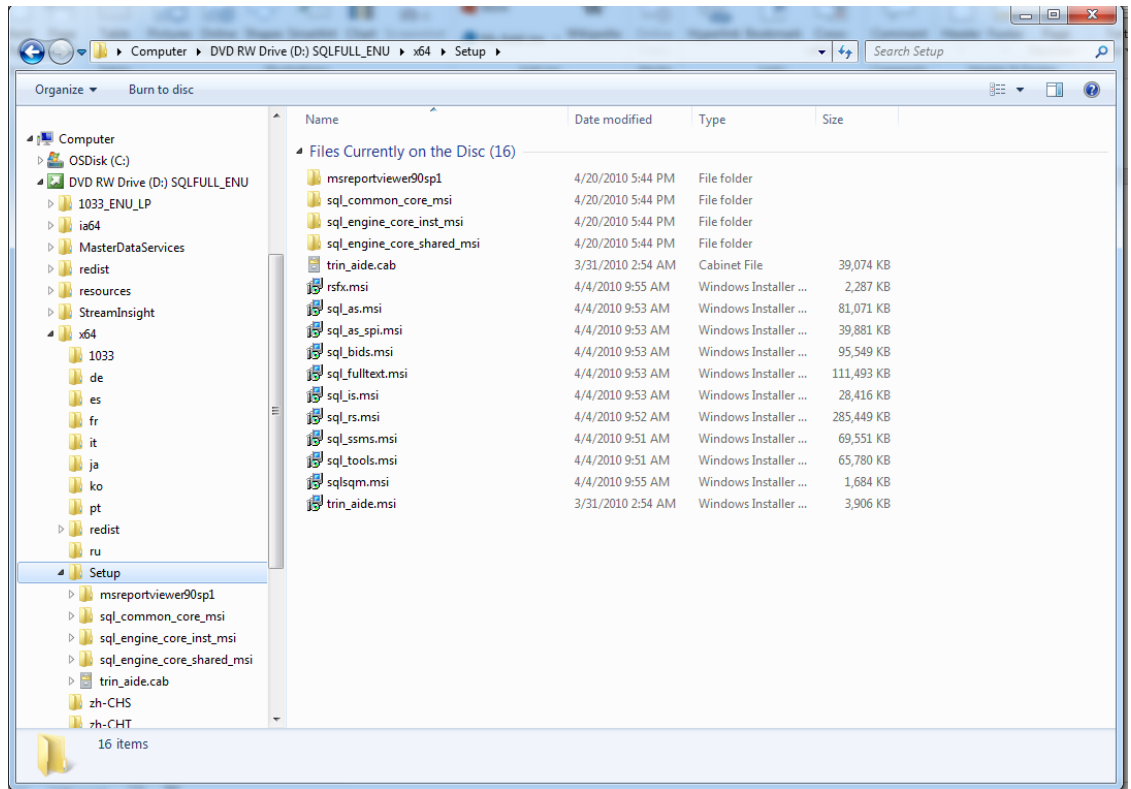


Figure 3-2. SQLServer2005_BC.msi - 64-bit

2. The License Agreement screen displays. Select the radio button **I accept the terms in the license agreement** and click **Next**.

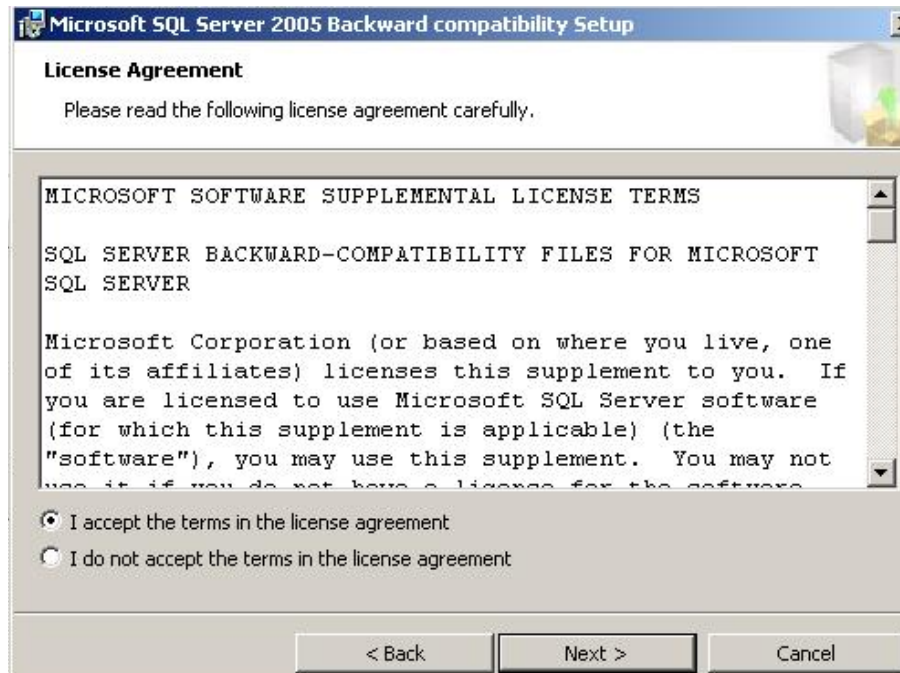


Figure 3-3. SQL Server 2005 Backward compatibility Setup - License Agreement

3. The Registration Information screen displays. Enter user information and then click **Next**.

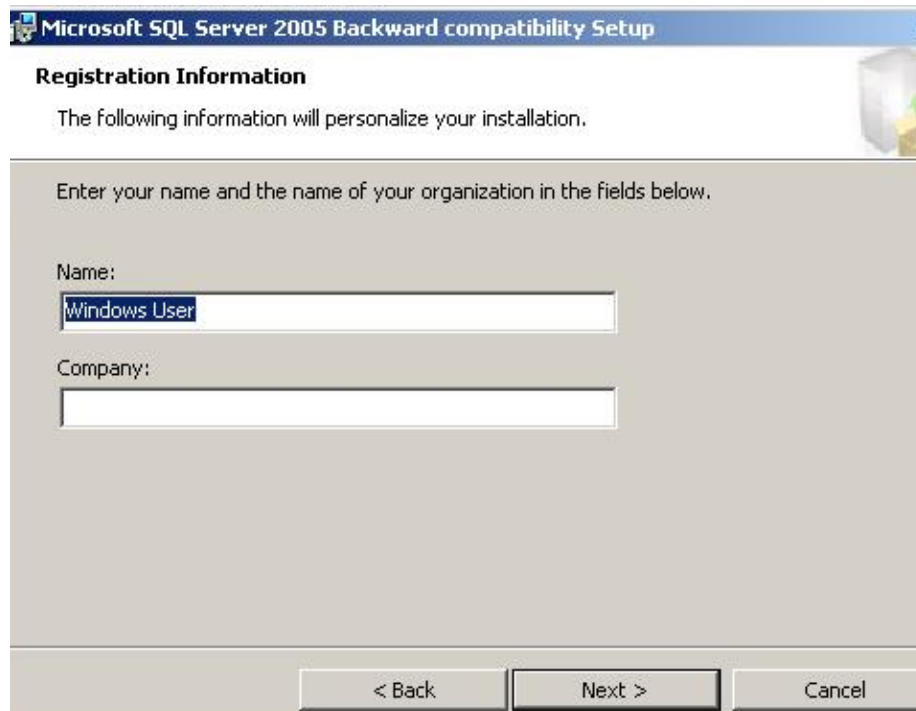


Figure 3-4. SQL Server 2005 Backward compatibility Setup - Registration Information

4. The Microsoft SQL Server 2005 Backward compatibility Setup screen is displayed. Click **Next**.

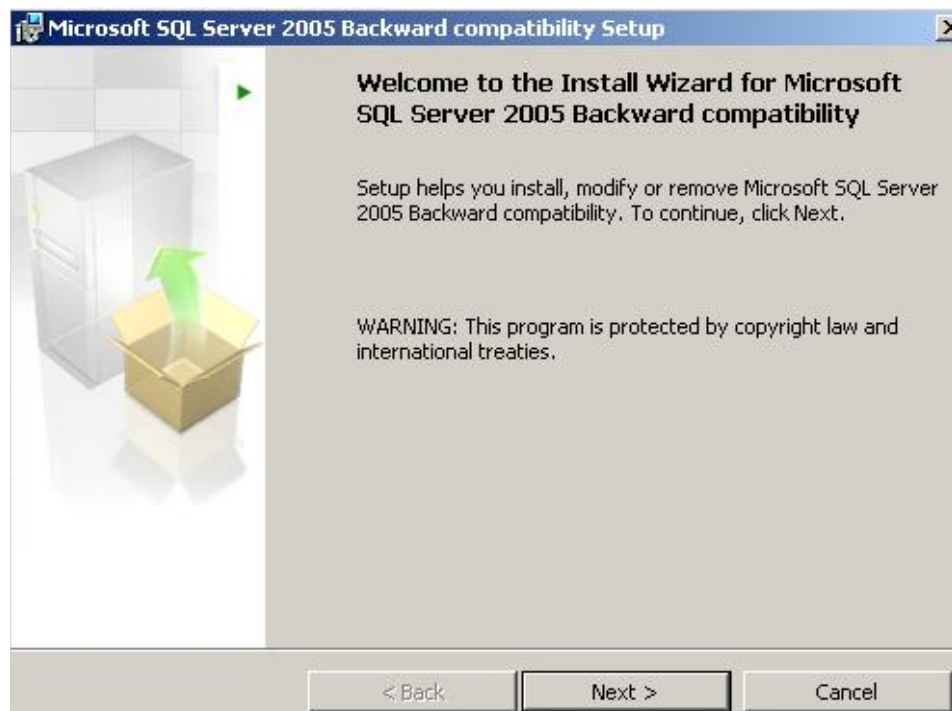


Figure 3-5. SQL Server 2005 Backward compatibility Setup - Welcome

5. The Feature Selection screen displays. Click **Next**.

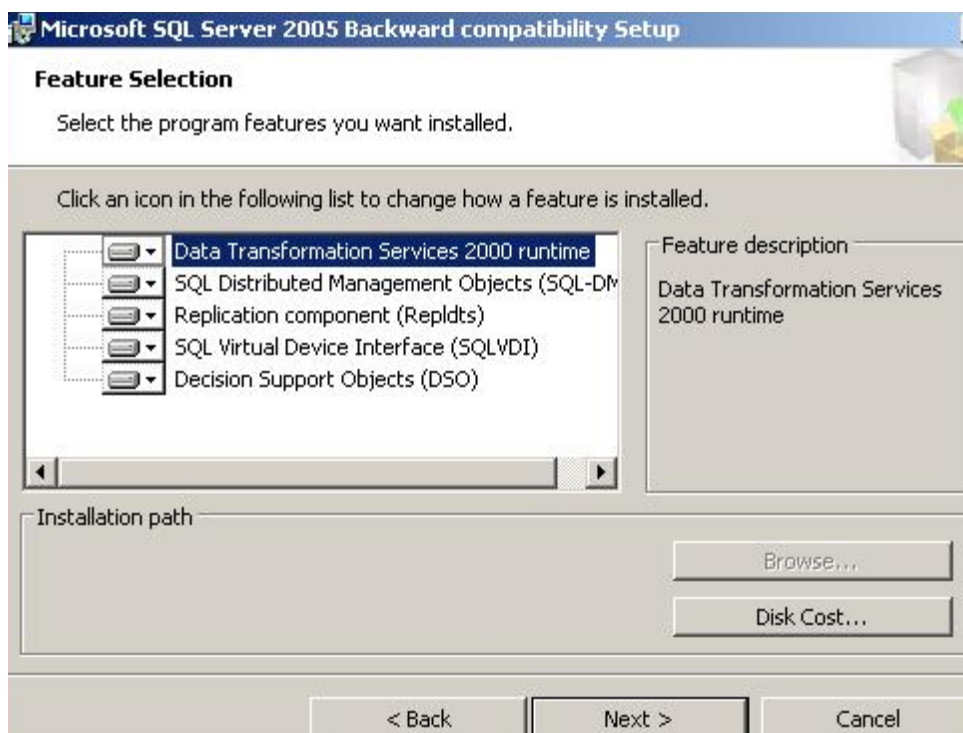


Figure 3-6. SQL Server 2005 Backward compatibility Setup - Feature Selection

6. The Ready to install the Program screen displays. Click **Install**.

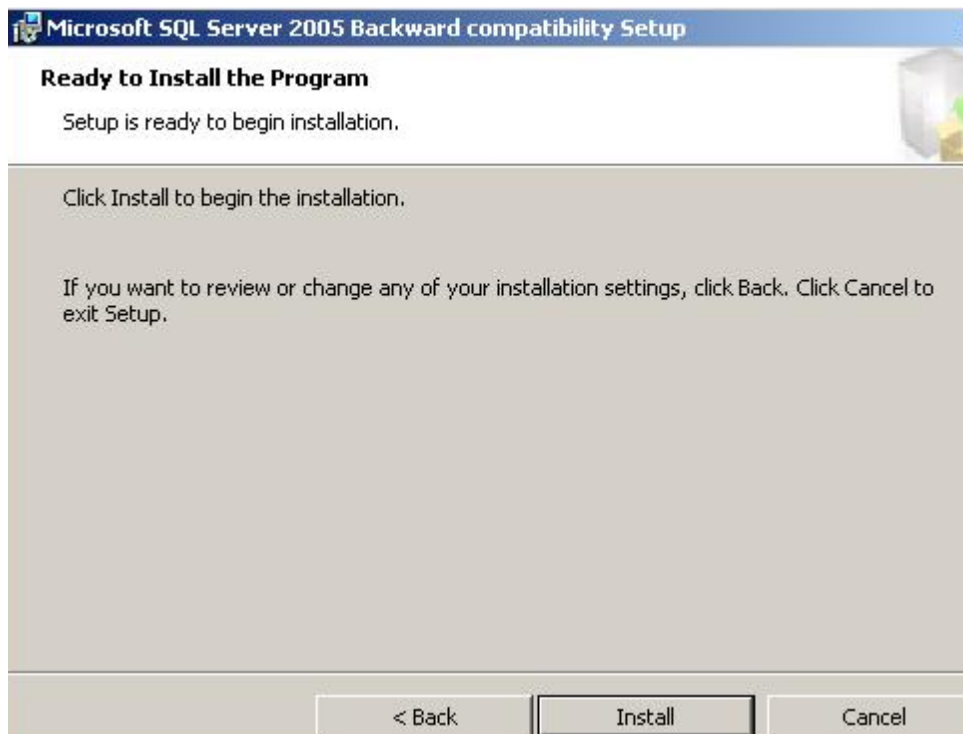


Figure 3-7. SQL Server 2005 Backward compatibility Setup - Ready to Install

7. The Completing the Microsoft SQL Server 2005 Backward compatibility Setup screen displays. Click **Finish**.



Figure 3-8. SQL Server 2005 Backward compatibility Setup - Completing Setup

Chapter 4: Enable Named Pipes

To allow for backwards compatibility with an LFS workstation, a change must be made once the installation of SQL 2008 has been completed. In previous versions of SQL and Windows, **ENCOR** used Named Pipes as the communications protocol for connections to the Front Office database on MFS1. However, Named Pipes are disabled by default in SQL 2008

1. Click **START > ALL PROGRAMS > MICROSOFT SQL Server 2008 R2 > Configuration Tools > SQL Server Configuration Manager**.
2. Open the SQL Server Network Configuration folder.
3. Click on **Protocols for MSSQLSERVER**.

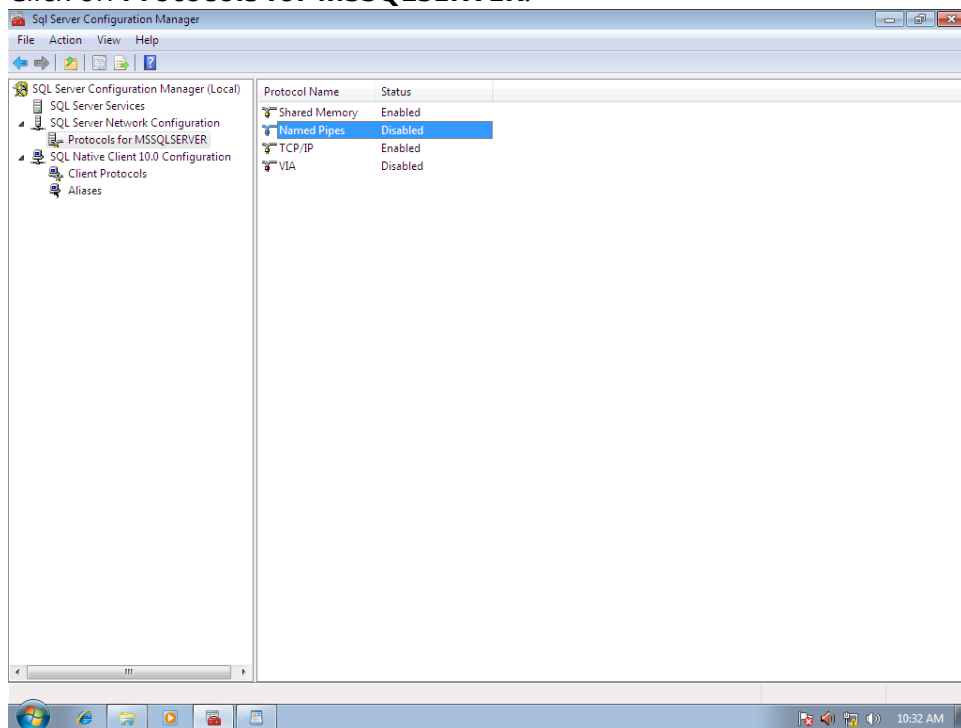
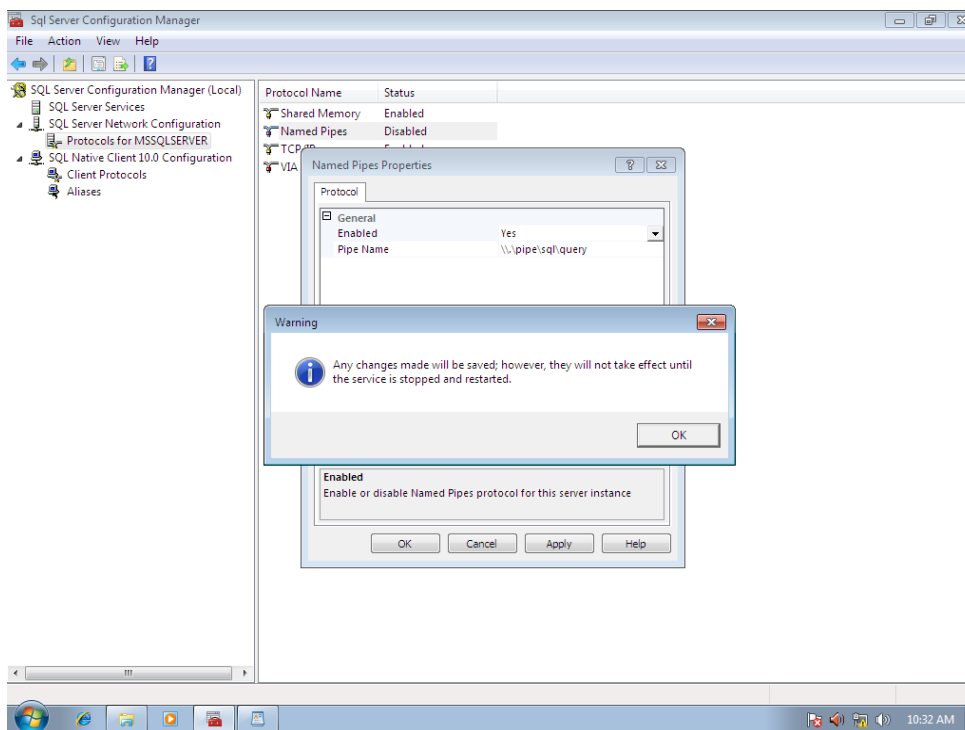


Figure 4-1. Sql Server Configuration Manager - Protocols for MSSQLSERVER

4. Double-click on **Named Pipes** and change the enabled value from NO to **YES**. Click **Apply**. Click **OK** to acknowledge the warning that changes will not take effect until the service is stopped and restarted.





5.  
6. Click **OK**, close all open windows, and reboot MFS1.

Figure 4-2. Sql Server Configuration Manager - Warning

Chapter 5: Disable Data Execution Prevention (DEP)

It is recommended that DEP be completely disabled on all **ENCOR** PCs.

DEP can be turned on for all applications, turned on for only certain applications, or can be completely turned off.

DEP settings can be changed through the GUI application, but a command level script must be run to completely disable the application.

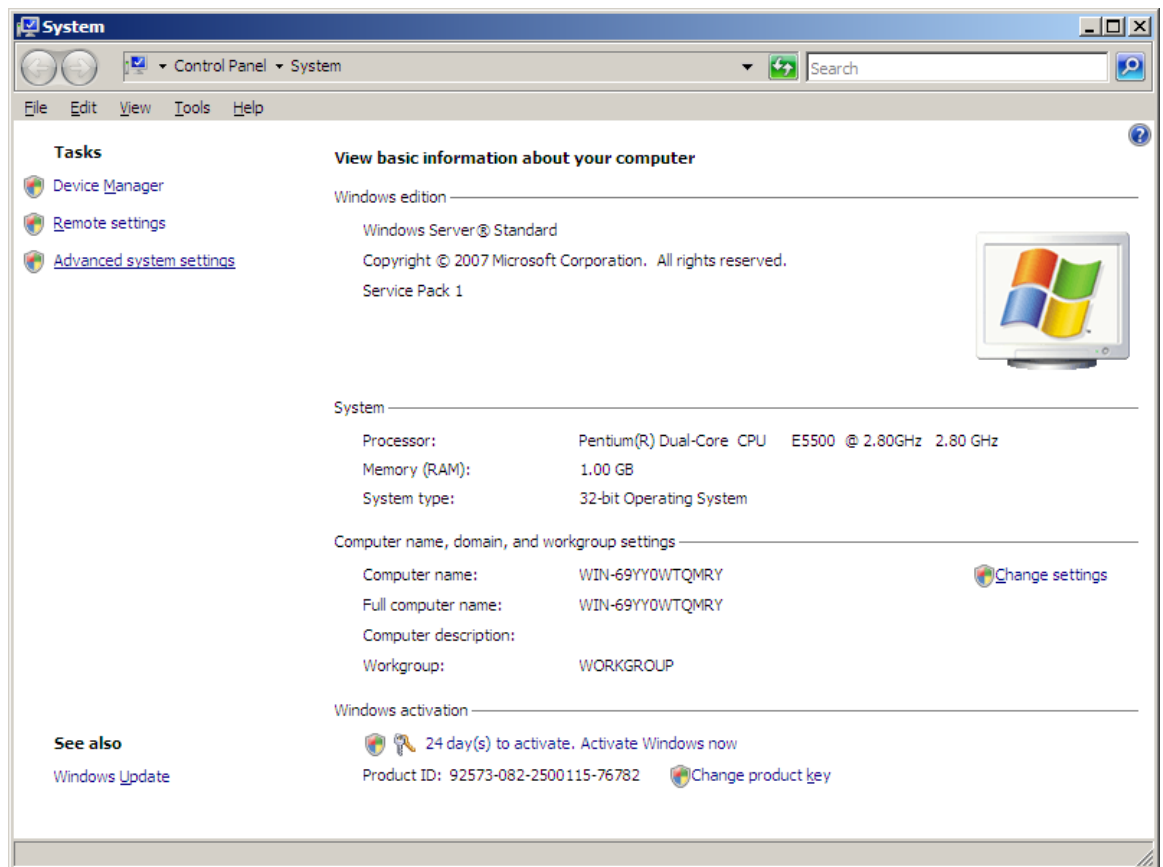


Figure 5-1. Control Panel - System

1. Check the current settings for DEP by opening the **System** application as shown below; then click on **Advanced system settings**.

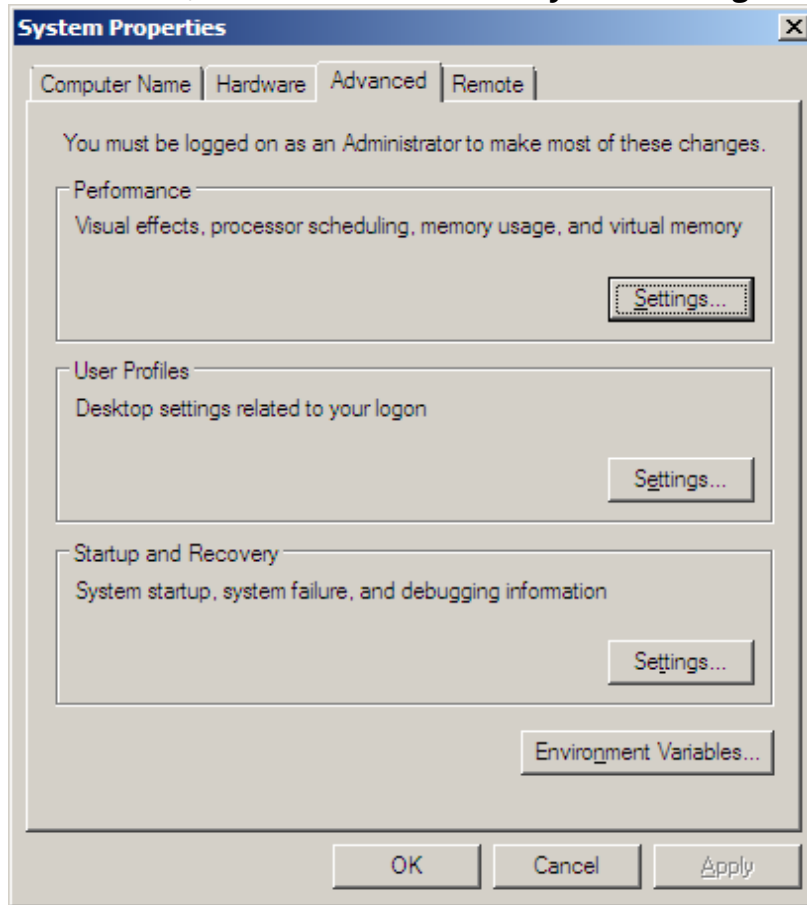


Figure 5-2. System Properties - Advanced Tab

2. Click on the **Advanced** tab followed by **Settings** in the Performance section.

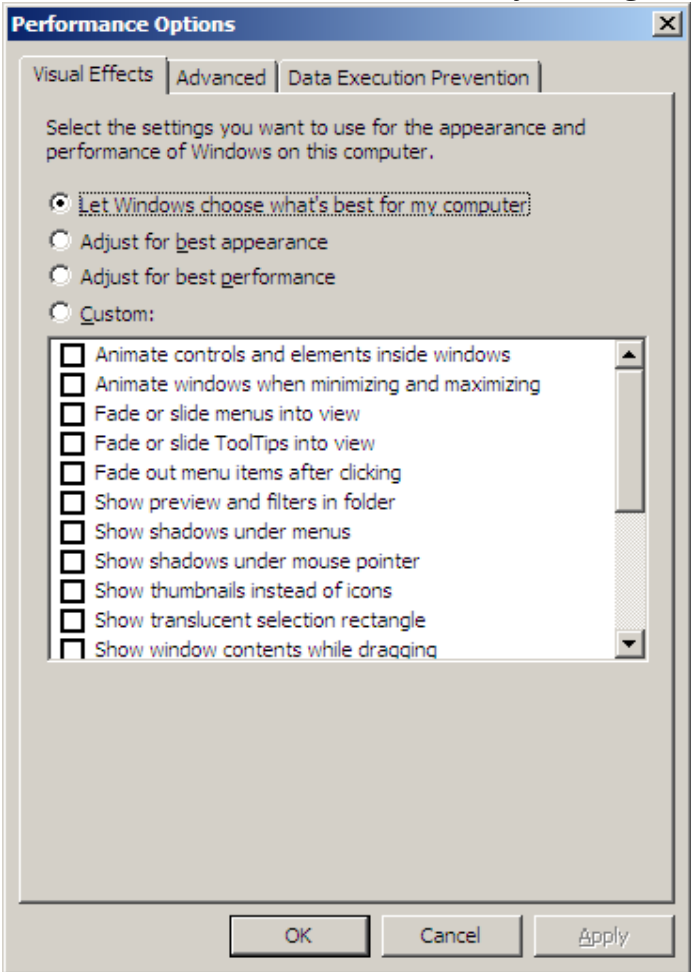


Figure 5-3. Performance Options - Visual Effects Tab

3. Click on the **Data Execution Prevention** tab.

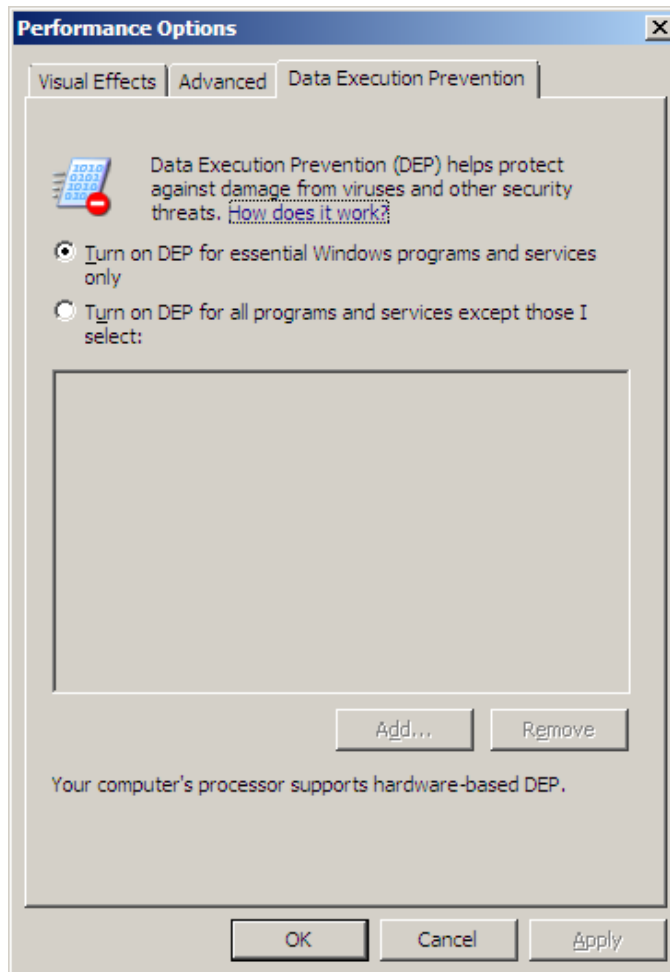


Figure 5-4. Performance Options - Data Execution Prevention Tab 1

4. In the above example, DEP is turned on for essential programs and services only.

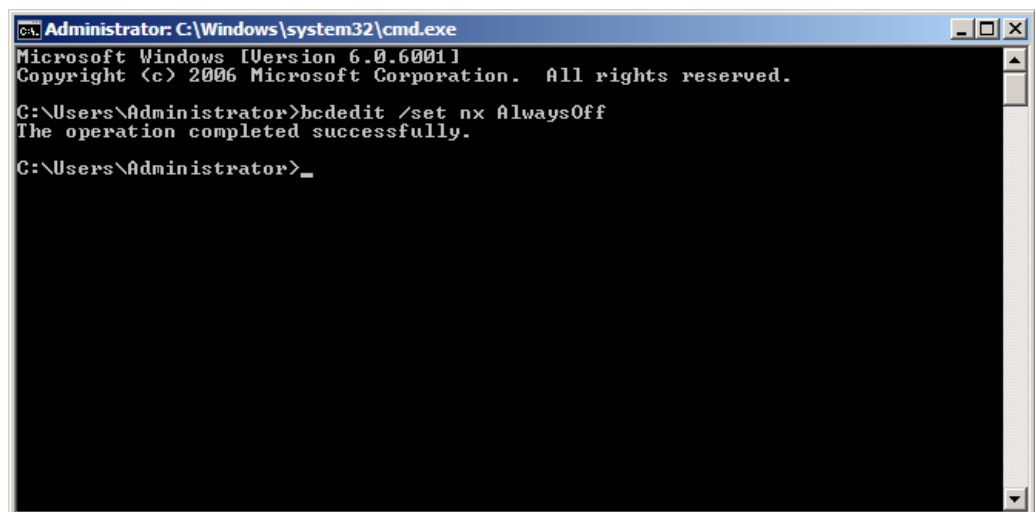


Figure 5-5. Command Prompt

5. Open a Command Line window and enter `bcdedit /set nx AlwaysOff`.
6. Reboot the PC and then check the status of DEP.

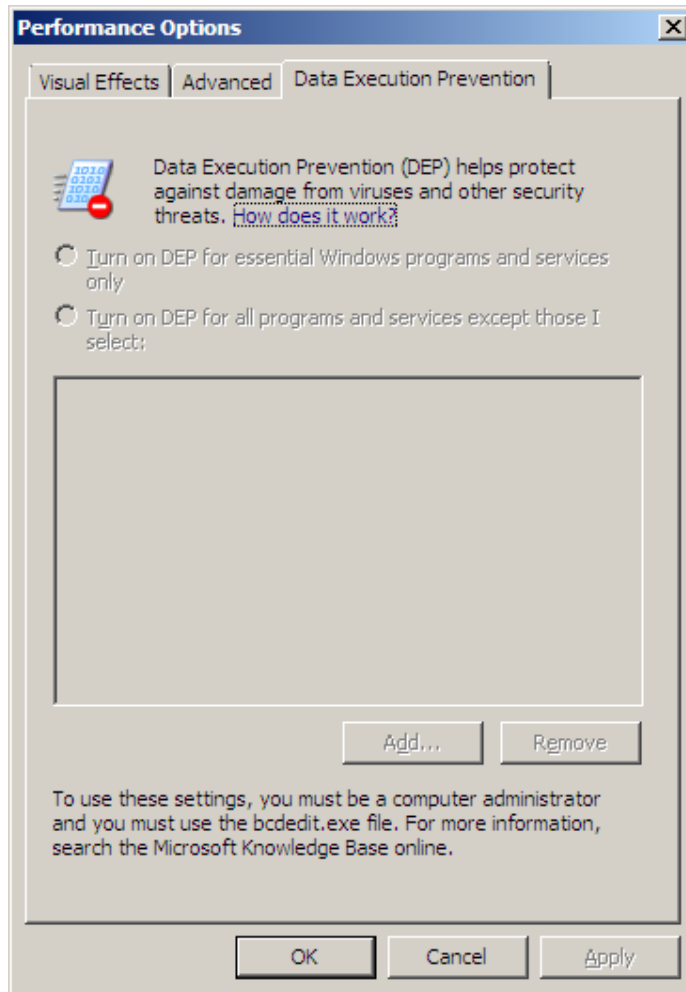


Figure 5-6. Performance Options - Data Execution Prevention 2

Note:

Both options are now grayed out above. This indicates that DEP is completely disabled for this machine.

7. The system is now ready for the **ENCOR** installation.



© NCR Corporation, 2018

NCR endeavors to ensure that the information in this document is correct and fairly stated but does not accept liability for any error or omission.

The development of NCR products and services is continuous and published information may not be up to date. It is important to check the current position with NCR. This document is not part of a contract or license, save insofar as may be expressly agreed.

NCR Corporation
2651 Satellite Blvd.
Duluth, GA 30096

P/N 89000925
PIN 45002/074